



designed and manufactured in Singapore

ECW-NA

Adjustable Height
Mobile Workstation



Feature Highlights

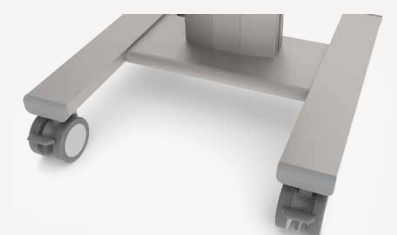
- Full aluminium structure
- Anti rust/corrosion
- Provision for future options
- German-made gas spring
- Smooth height adjustment mechanism
- Anti-tripping footrest
- Weight loading at 30kg safety factor
- Max weight loading at 30kg
- Ergonomic & intuitive worktop design
- Customisable material
(Anti-microbial HDPE / Phenolic)
- Customisable design
- German-made non-marking castors
with 2 front brakes



Slide-out work surface



Height adjustment Lever

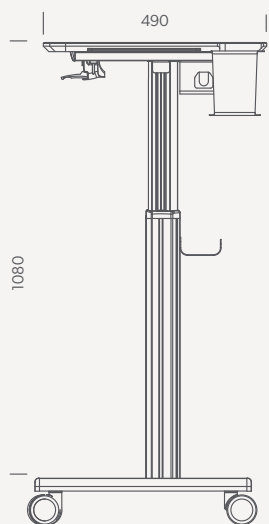


Premium non-marking castors

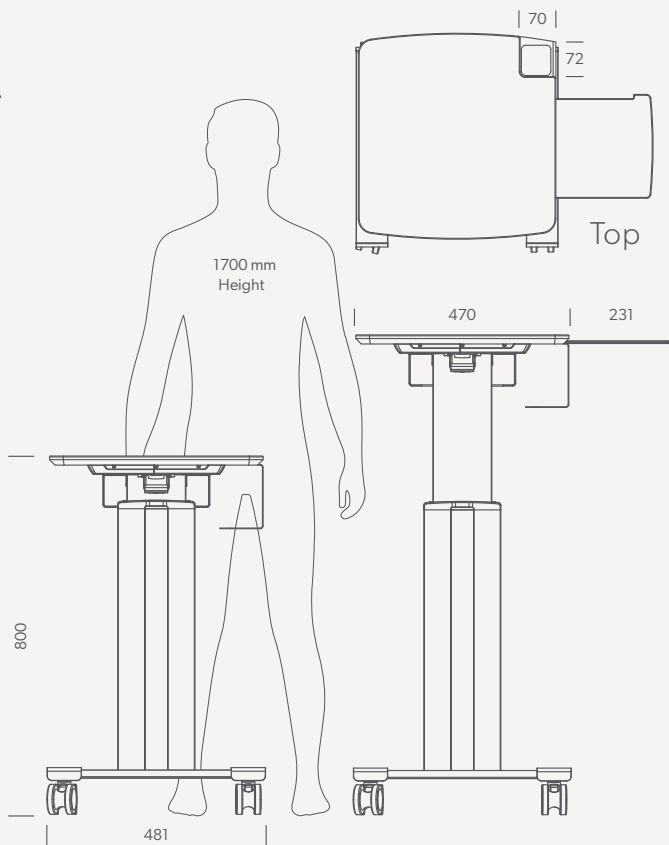
Technical Specifications

ECW-NA

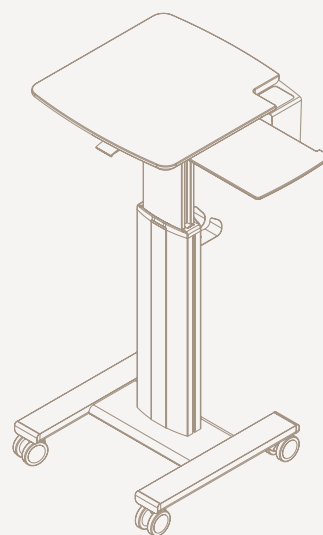
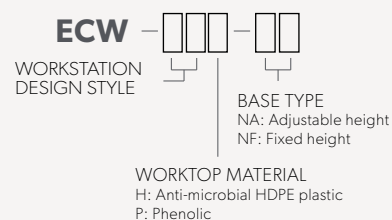
Width 490 mm
Depth 470 mm
Height 800 - 1080 mm



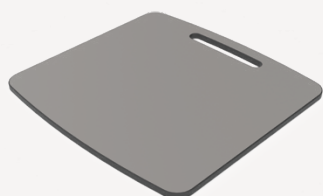
Side



Front

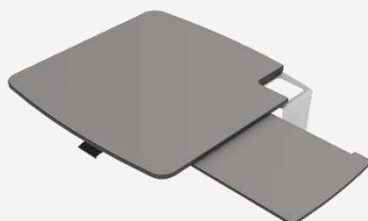


Optional Features



WT: 01P

- Plain anti-microbial compact laminate worktop (Phenolic)
- Ergonomic handle for mobility



WT: 03P

- Plain anti-microbial compact laminate worktop (Phenolic)
- Integrated hand sanitizer holder
- Integrated left/right slide-out work surface



WT: 04H

- Anti-microbial plastic worktop (HDPE)
- Integrated ergonomic handles
- Laptop strap and kensington lock provision
- Integrated left/right slide-out work surface



WT: 06H

- Anti-microbial Plastic Worktop (HDPE)
- Integrated Ergonomic Handles
- Laptop Bezel Lock Provision
- Integrated Left/Right Slide-out Work Surface

Customisation

This unit can be customised to your preference in colour, dimensions and features. Feel free to contact our sales department for your needs.

- Size
- Colour
- Finishes
- Hardware



Systemz Pte Ltd

16 Sungei Kadut Way
 Singapore 728793
 +65 6465 0387 (Main)
 +65 6465 0656 (Fax)
 info@systemz.sg
 www.systemz.com

designed & manufactured



Singapore