



designed and manufactured in Singapore

PTH

MP-015-A

Systemz
Pass-thru
Hatch

Feature Highlights

- Stainless Steel (SS316) internal compartment
- Modular construction. Designed with separate components for ease of installation
- Intelligent Electro-Magnetic (EM) Lock with wave-to-open technology interlocked glass door
- Self-closing pivot hinge with quick release for easy maintenance
- Air-tight compartment with magnetic soft rubber door gaskets
- Easy to clean, rounded corners, minimal gaps and screws
- High quality components & ultra long durability
- Suitable for BSL-3 application
- UV-C Germicidal lamps for disinfection (optional feature)



Easy to clean with rounded edges



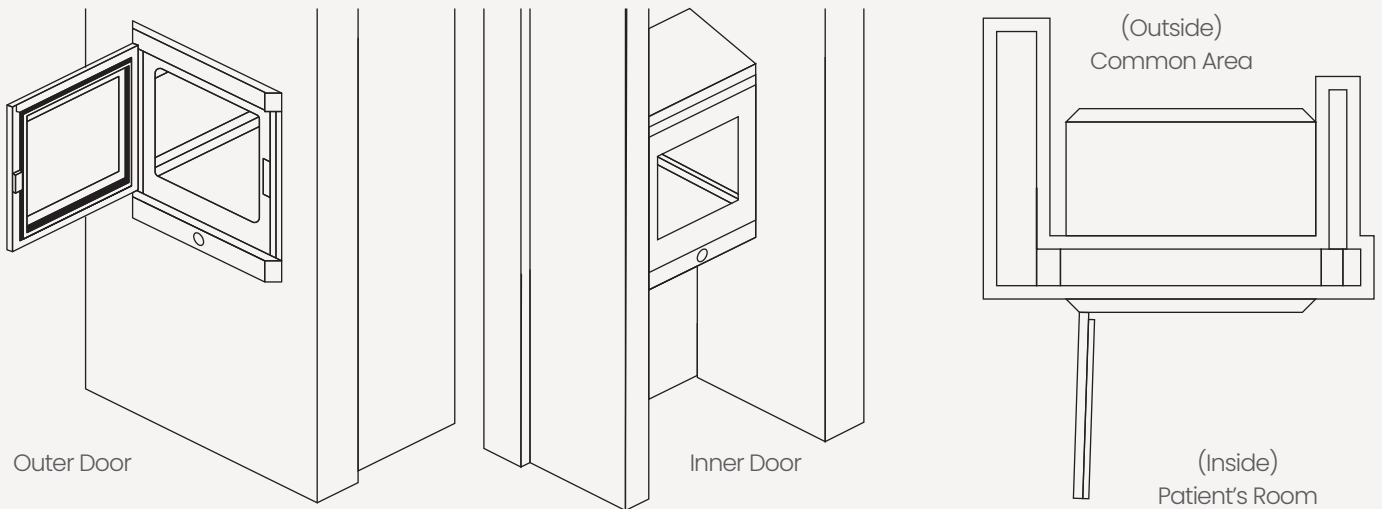
High quality components

Operation & Maintenance

Interlock Aluminium Frame with Tempered Glass Doors

Intelligent EM Lock with Wave-to-open technology, when one door is open, the other door will close (inaccessible).

Door opens to one side only. User to specify either left or right side opening.



Actualised unit deployed in NCID





CAUTION

The operator should always verify that the opposite door is fully close prior to opening a door. Attempting to force open a door while the EM interlock is engaged may result in damage to the unit. Do not shake, or apply excessive force to the doors.



Wave technology (Hand sensor)

LED Indication



"Red" indicates that the Electro Magnetic Lock



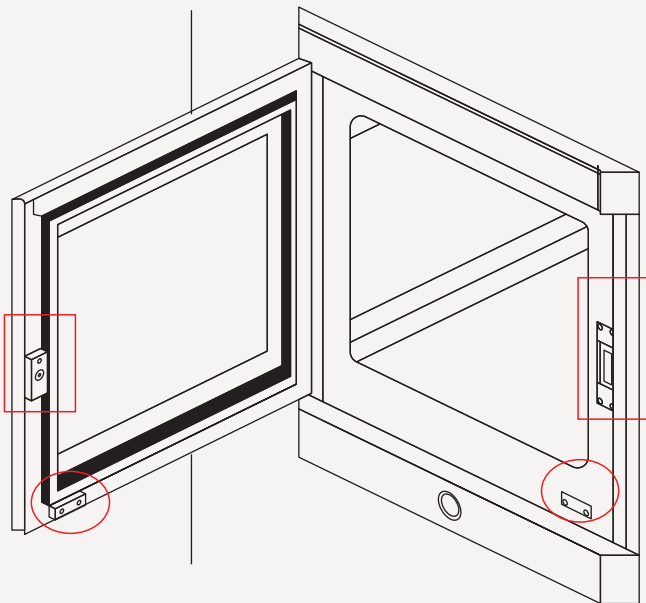
"Green" indicates that the Electro Magnetic Lock is not engaged/not energised.

About 4-seconds-Door is Open (EM Lock not energised), after 4-seconds, LED light turns RED and EM Lock is Energise.



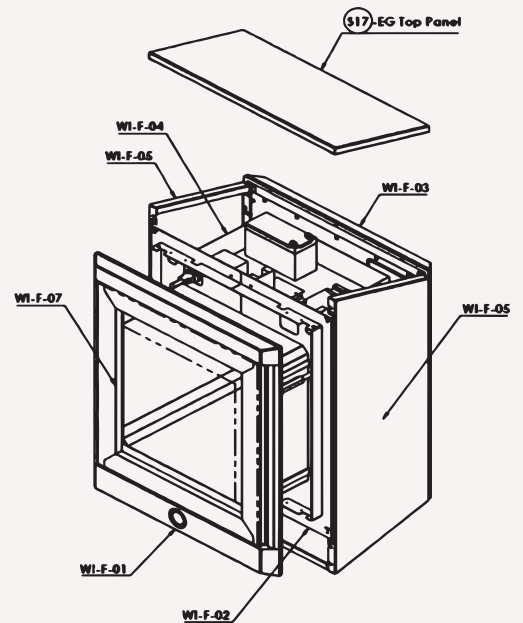
CAUTION

Make sure there are no foreign objects blocking the doors & body. Do not use abrasive cleaners



Periodical Cleaning

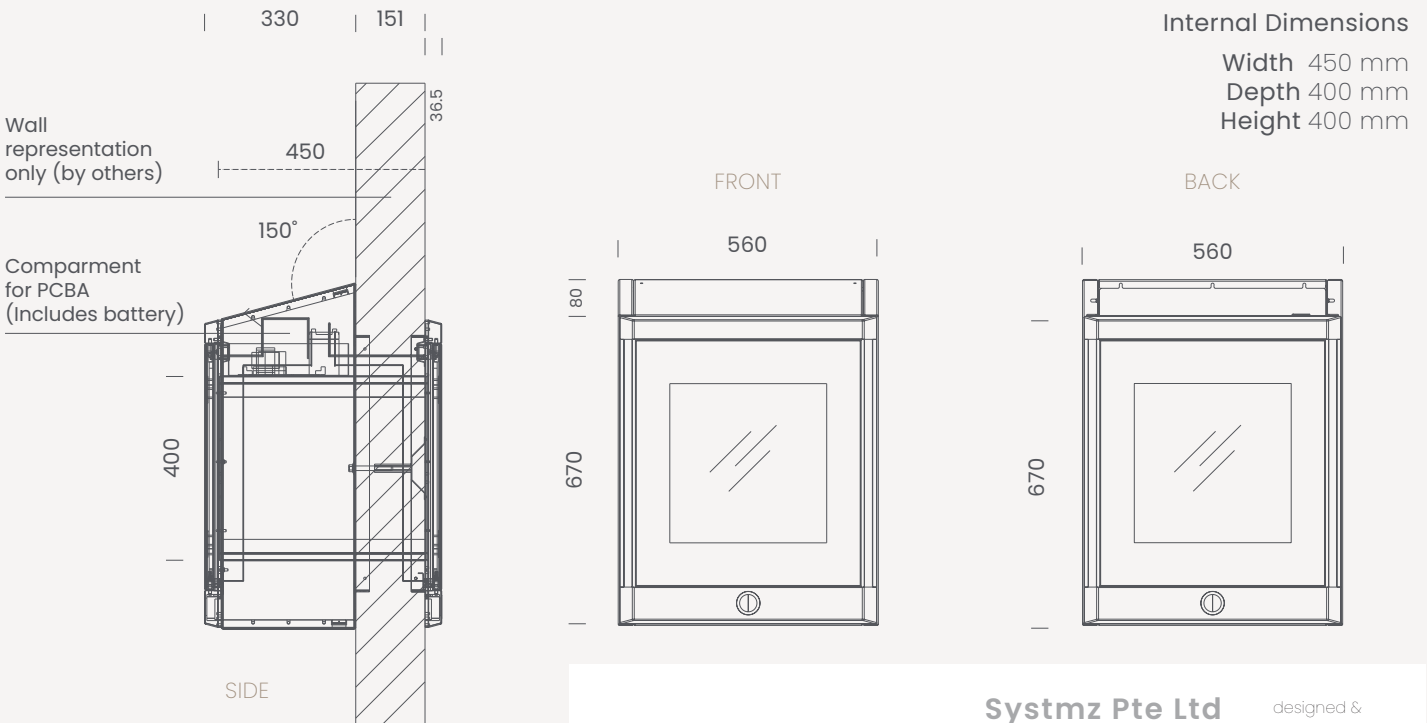
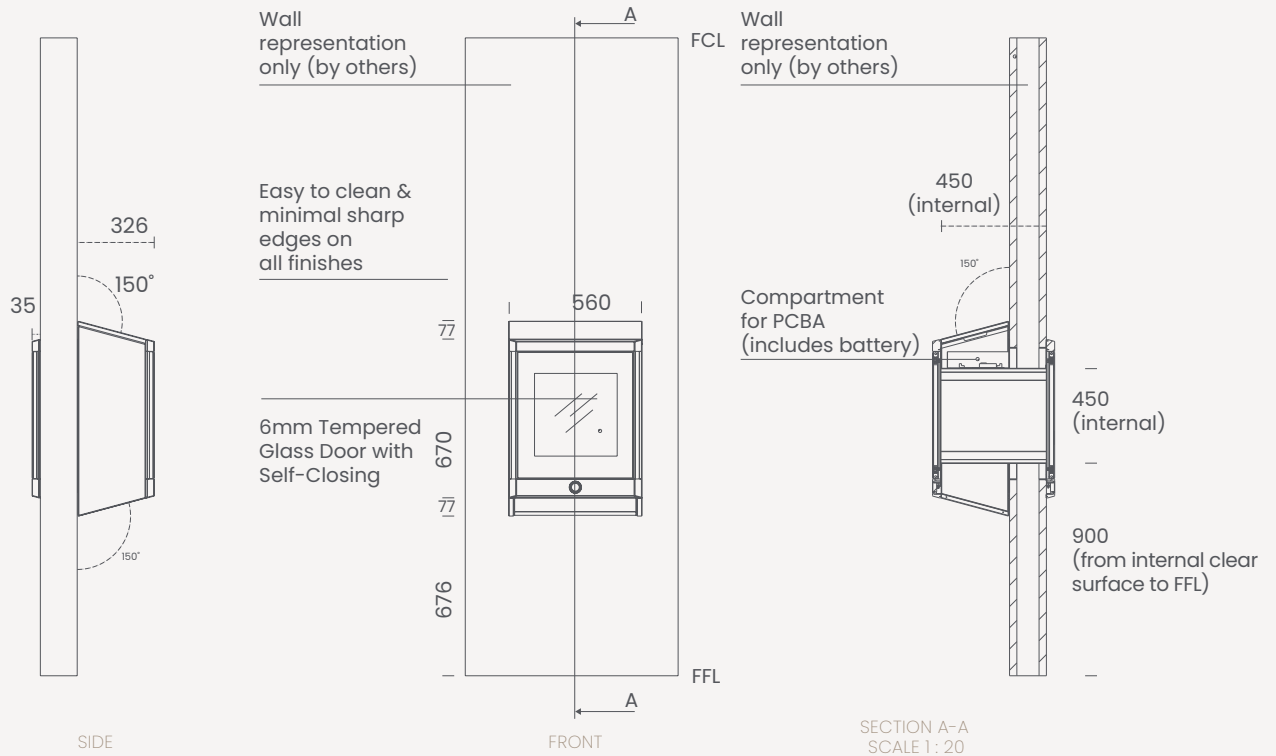
The Magnet should be cleaned regularly to maintain full holding force.
(including the mating Armature & Sensor/Reed)
Both sides of the Pass Through Hatch



Periodical Check

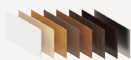
Periodically check the battery condition inside the Pass Through Hatch body.

Technical Specifications



Customisation

This unit can be customised to your preference in colour, dimensions and features. Feel free to contact our sales department for your needs.



- Size
- Colour
- Finishes
- Hardware

Systemz Pte Ltd

16 Sungei Kadut Way
Singapore 728793
+65 6465 0387 (Main)
+65 6465 0656 (Fax)
www.systemz.sg
info@systemz.sg

designed & manufactured



Singapore