



COMPUTING WORKSTATIONS AND POINT-OF-CARE PRODUCTS



Elevating performance,

every day.

Through inventive product design and commitment to customer support, Capsa Healthcare has been a market leader for over 50 years.



Our job is to help you do yours. **Capsa Healthcare** is built upon a 50-year foundation of experience and innovation designed to improve the organization, efficiency, and accuracy of healthcare providers. We strive to elevate your performance by offering innovative solutions that positively impact clinical effectiveness in healthcare environments. We understand the delivery of healthcare cannot wait, which is why we continually invest in product development, technology innovation, service, and support to make sure we are the logical choice for products that elevate the performance of healthcare delivery at the point-of-care.

Capsa Healthcare provides an extensive portfolio of mobile computer carts, point-of-care wall mount products, and service programs designed to optimize your health IT program. With extended cart runtime and simple serviceability, Capsa's mobility solutions improve user experience and support better clinical workflow.

Inquire about special
Tailored Cart Fleet
Replacement Programs.

Renew with Capsa.

Computing Carts

The M38e from Capsa Healthcare is an evolution of the most proven point-of-care computing cart in healthcare. With updated features that provide superior ergonomics, enhanced ease-of-use, and expanded storage flexibility, the M38e maximizes clinical efficiency and elevates the performance of your health IT program.

- Smaller profile glides through tight care settings
- Large work area with additional 100 square inch expandable surface feature
- Increased battery runtime for consistent uptime performance
- Large CPU storage area for expanded tech organization



Ergonomic Adjustability

Simple adjustments for individual preference and ergonomic comfort



Secure

Intuitive locking and security system



Storage

Flexibility to configure workstation with storage drawers or bins



M38e

Features & Models

**N-Sight™ Fleet Management**

Optional add on module to monitor and optimize fleet deployment

**Flexible Work Surface**

Expands for additional workspace

**Powerful Battery**

Efficient Li-ion power in cart base or swappable pack system provides extended runtimes

**M38e**

Document Model

M38e

XP Model

M38e

RX Model

General Specifications:

- Base Size: 17"x17"
- Weight: Configurations starting at 87.5 lbs
- Cart Height: 49.3" to 65"
- Work Surface: 17.25" W x 10.25" D
- Casters: 4" or 5" standard or directional casters
- Adjustable height, tilt/swivel monitor mount and keyboard tray options
- Enhanced lighting features to assist with navigating and working in darkened areas

Optional Accessories:

- Access pack
- Wire basket
- Scanner mount options
- Printer shelves
- Waste bin

Ask your Capsa Representative about bin cassette transfer carts.

Power System	Non-Powered	AC Powered Lithium
Target Run-Time (typical configuration):	Laptop battery only	9-12 Hours/Charge
Charge Time from Empty:	Laptop charge time only	2.5 Hours
Battery Life Cycles:	N/A	2500+
Recommended Technology:	Laptop (up to 15" screen)	Laptop (folded), thin client, or All-In-One PC

Mobile Nurse Stations

CareLink Nurse Workstations elevate mobile computing to the next level, with improved communications, N-Stride™ steer assist, and N-Sight™ proactive cart fleet management. CareLink provides ergonomic features and workflow solutions that will simplify the rigorous day-to-day tasks associated with providing patient care.

- Fully configurable storage and organization
- Two-position front handle and rear handles for easy maneuvering
- Keyboard, work surface, and ground lights for working in darkened rooms
- Smooth non-porous surfaces for easy cleaning and durability
- T-track provides universal mounting point for accessories
- Use a laptop or your choice of computing hardware



Intelligent Platform

N-Sight™ remote fleet management with no software to install or maintain



Easier to Move

With N-Stride™ steer assist, CareLink is virtually effortless to maneuver and control



Saves Time

CareLink's 7" glass touchscreen enables improved communications and simplified use



CareLink
Nurse Workstation

Features & Models



Storage and Organization

Multiple bin options and configurations address specific requirements



Expansive Work Area

Slide-out surface for additional workspace



On-Board Calculator

Enables bedside calculations



CareLink XP

Shown with Laptop

CareLink RX

Shown with Monitor

CareLink Double RX

High Capacity Cart*

* A compact footprint and flexible bin system, the CareLink High Capacity Double RX Medication Cart maximizes nurse efficiency, mobility and patient safety.

General Specifications:

- Base Size: 17" x 19"
- Starting Weight: 106 lb
- Height Range: 49.3" to 65"
- Work Surface: 20.75" W x 10" D
- Casters: 5", 2 locking
- Lift Type: Manual or Electronic
- Display Max Weight/Size: 15 lb, 24" monitor max

Optional Accessories:

- Access pack
- Wire basket
- Scanner mount options
- Large printer shelf
- Trash bin

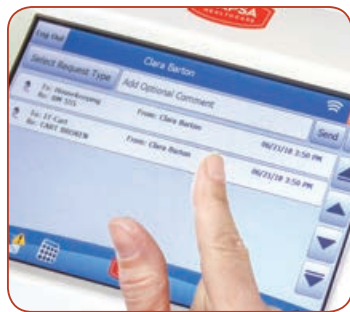
Ask your Capsa Representative about bin cassette transfer carts.

Power System	Non-Powered	AC Powered Lithium
Target Run-Time (typical configuration):	Laptop Battery Only	9-12 Hours/Charge
Charge Time from Empty:	Laptop charge time only	2.5 Hours
Battery Life Cycles:	N/A	2500+
Recommended Technology:	Laptop (up to 17" screen)	Laptop (folded), thin client, or All-In-One PC

Features

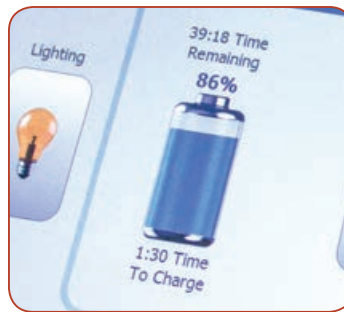
Saves Time

Reduce time wasting activities and increase time spent with patients.



Communication Tools

Using on-board messaging software, sending service requests and receiving notifications is easier than ever



Battery Runtime Icon

Easy-to-read battery status icon indicates the amount of runtime remaining



Electronic Lift

Save personalized preferences, such as seated and standing heights, through a fleet-wide memory system



Flexible to Meet Changing Needs

Future-proof design provides a universal power system and ability to easily upgrade to medication administration without purchasing a new cart

Easier to Move

Improved maneuverability and ergonomics assist with workflow and decrease patient disruptions.



N-Stride™ Steering Control

By locking a front caster, users can easily navigate halls and turn corners without unnecessary strain



Dual-Position Handles and 5" Casters

Ergonomically designed handles provide additional user comfort, while larger casters help cross thresholds and maneuver over carpet



Additional Lighting Options

Three lighting options assist with navigating and working in darkened areas without disrupting patients



Height-Adjustable Rotating Monitor

Easy-to-move adjustable monitor helps ensure proper ergonomics to both prevent injury and promote sharing of information with patients

Fleet Management

N-Sight is a cloud-based system that enables hospital IT to remotely manage and monitor point-of-care carts used by clinicians. N-Sight facilitates improved asset utilization, maximizes fleet performance and value, and helps identify and prevent issues before they impact clinicians.

N-Sight Cloud Based Platform



The N-Sight Difference

- **Robust Cloud Solution:** N-Sight is a cloud based platform with no client software to install on facility desktop workstations or cart-based computers.
- **Asset Utilization:** Provides different analytic points to evaluate asset utilization and manage fleet deployment to ensure the right number of carts are in the right locations.
- **User Administration:** Enables remote management of cart user groups, user logins, PIN codes, and security settings for strict control over access.
- **Configuration Settings:** Centralized management of CareLink Cart configurations for Displays & Alerts, PIN's, Notifications and Service Requests.
- **NEW.** Add N-Sight's remote fleet management to your M38e carts to optimize fleet deployment and maximize cart uptime. Contact your Capsa Regional Sales Manager for more details.



Asset Utilization

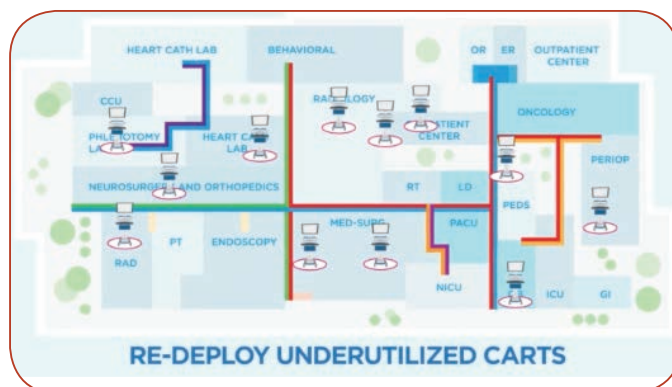
N-Sight facilitates asset utilization through optimizing fleet deployment and maximizing the uptime and availability of carts.

Right-Size Your Fleet

- Evaluate utilization patterns and peak needs through Access Monitoring to determine if the number of carts in a unit or facility meet current clinical demands
- Identify opportunities to redeploy carts to locations with greater needs, optimizing asset utilization
- Cart fleet utilization reports can be exported for further review and distribution across your service and support teams

Proactive Monitoring

- Maintain cart availability while proactively monitoring cart fleet power levels and performance throughout the facility or network of facilities
- Power Analytics provides visibility into power usage and allows adjustments to technology settings to extend cart runtimes



Training and Education

- Monitor fleet or individual cart charging activity and history to identify potential training and education opportunities to improve runtime and cart availability

Remote Fleet Management

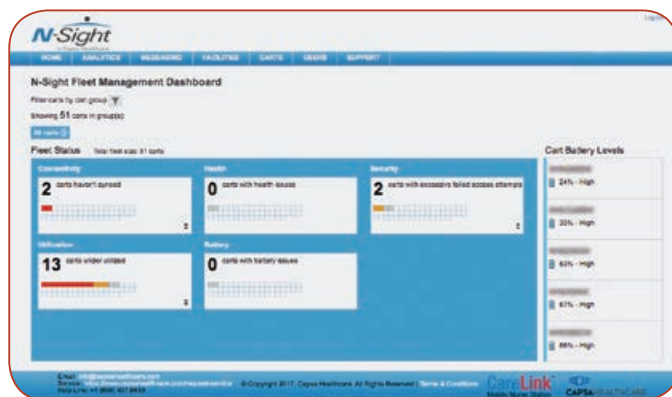
N-Sight saves IT time with managing their cart fleet and the administration of their users.

Intuitive Dashboard

- Illustrates current battery levels sorted from lowest to highest and summarizes fleet performance over the past 24 hours...no more "making rounds" to assess cart fleet performance
- Monitor fleet status and connectivity, showing carts that have not connected in the last 24 hours
- View cart utilization and identify those that have not been accessed recently

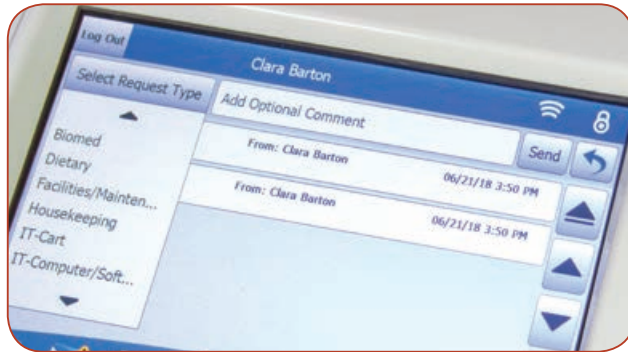
Remote User Management

- Remotely manage and update user IDs, PIN codes, and user permissions
- Monitor cart access and security PIN codes being utilized



Integration With Hospital Systems

To facilitate communication between clinicians, IT, and other hospital departments, N-Sight offers integration with hospital systems that can accept email/SMTTP input.



Service requests can be emailed to a specified address, integrating into Help Desk, Housekeeping, or other hospital systems



Email alerts can be configured to notify the service team when carts have connectivity, battery or utilization issues so they can be quickly resolved

Pin Code Interface

CareLink PIN Code Interface

An easy-to-use interface that provides better security and more value from fleet management. Users no longer have to enter and remember PIN codes, which promotes faster workflow and leads to improved asset utilization and access monitoring analysis.

- Login and unlock bins or drawers using "Tap and Go" badge readers or proximity sensors, single sign-on or EMR, including scanning patient's wristband to unlock bin
- Send pin code commands via a special USB cable to login or unlock bins or drawers. Includes optional lock and logout commands, in addition to auto-lock and auto-logout

Active Directory

Active Directory Service for N-Sight

Administer Cart Users directly from Microsoft Active Directory (AD). The simple utility maps attributes from AD to N-Sight providing easier user management, centralized management of security and improved asset utilization analysis.

- Integrates with existing AD processes used when users join and leave the organization
- Utility on AD server manages a service to push updates to N-Sight at defined intervals, such as hourly or daily

Laptop Cart

The non-powered, ultra-lightweight SlimCart™ glides easily through tight care settings, providing a flexible, cost-effective solution for mobile documentation. The compact profile and 4" casters allow for simple mobility through doorways, in patient rooms or in hallways. The SlimCart™ provides a generous work surface with a slide-out mouse surface on the left or right side, and is configurable with your choice of laptop, tablet, or lightweight computer monitor.

- Configurable with your choice of laptop, tablet, or lightweight monitor
- Ultra lightweight, starting at just 27 pounds
- 15.35"w x 16.73"d compact profile for maneuvering in tight spaces
- Flexibility to configure with one or two storage drawers



Storage Drawers

Optional key-lock or non-locking removable drawers for efficient and secure storage



Slim Profile

Lightweight, compact size maneuvers easily through tight spaces



Configurable

Configurable with your choice of laptop, tablet or lightweight monitor



SlimCart™

Shown with laptop

Laptop Cart



Compact Footprint



Ample Work Space



SlimCart™

Shown with tablet

General Specifications

Starting Weight:	27 lbs
Height Range:	33.25" to 49.5"
Adjustment Range:	16.25"
Footprint (width front to rear):	15.35-16.02" W x 16.73" D
Work Surface - Work Area:	14.52" W x 12.35" D
Work Surface - Outer Dimensions:	17.28" W x 20.39" D
Casters:	4" (front locking)
Lift Type:	Manual
Display Max Weight:	8 lbs

Optional Accessories:

- Rear work surface bins
- Scanner shelves
- Scanner fork
- Power supply holder

*Contact your Capsa Sales Representative for more detailed information about the **NEW SlimCart™***

Laptop Cart

Designed to accommodate your choice of laptop computers, the LX5 Laptop Cart offers a lightweight and non-powered design that lets you configure the cart to meet your requirements. The LX5 promotes simplicity and value to help lower your total cost of mobilizing health IT software.

- Accommodates widescreen laptops up to 17"
- Ergonomic adjustability is simple with LiftAssist™ height adjustment
- Laptop anti-theft security bridle
- Small footprint, slim profile, and super-lightweight
- Flexibility to configure with storage drawers including 3" or 6" depth



Wide Screen

Capable of accommodating widescreen laptops featuring 17" monitor



Lockable Drawers

Optional 3" or 6" key lock storage drawers provides secure storage of medications and supplies



Removable Drawer Tray

Store small items with drawer trays that can be sub-divided to meet specific storage needs



Scanner Mount

The optional scanner holder provides easy access to cordless or tethered scanners for barcode scanning



LX5

Computing Cart

With its light-weight construction, compact ergonomic design and large work surface, the non-powered M40 Computing Cart is ideal for mobile electronic documentation needs.



Work Surface

Large work surface with access to power button for easy laptop reboot



Integrated light

Keyboard light with auto shut-off feature for use in low light areas



Mounting Track

T-track provides a universal mounting point for accessories



Monitor Mount

Available with monitor mount and CPU storage

- Integrated keyboard light with auto shut-off feature for nighttime use
- Document cover protects reference documents and notes placed on the work surface
- Oversized 20" wide x 11" deep work surface
- Work Surface has a 16" range of adjustable height
- 19" x 21" compact base for easy maneuvering in patient areas and tight spaces
- Accommodates up to 17" notebook and tablet PCs
- Contoured handles minimize strain when pushing cart
- Handles located in front and back



M40

Fluid™ ULT Arm

Wall Mounted Workstation

The Fluid ULT Arm is designed to provide maximum stability, flexibility, and functionality to facilitate clinical documentation and patient interaction in nearly any healthcare environment. With an unmatched room reach of 62", enhanced fluid single handed positioning, and expanded vertical adjustment the ULT provides a flexible and comfortable workstation for seated or standing interactions.



Easy to Organize

Expansive work surface with left/right mouse surface and enclosed keyboard storage



Maximum Extension

Optional extension arm provides 62" of reach that allows closer patient engagement



Easy to Adjust

22" in vertical arm adjustment with 180° independent monitor and keyboard rotation

- Integrated keyboard light with auto shut-off
- Independent monitor and keyboard rotation of 180°
- 22" in vertical arm adjustment with increased lower range supports seated or standing patient interactions
- For maximum extension, configure with an optional extension arm to provide 62" of reach into care environment
- Slim profile under 9.5" when stored to maximize space and function in care environments
- Constructed to allow for mounting onto previously installed industry compatible tracks or supplied 34" track
- 20 pound weight capacity supports a variety of monitor configurations



Fluid™ ULT Arm

Fluid™ ULT Arm

Accessories & Specifications

Optional Accessories:



Scanner Holder

Platform for charging bases used with wireless scanners



Tech Box

Ensures technology is concealed and secured



Access Pack

Organizes essential supplies at the point-of-care



Fluid™ ULT Arm
with Extender Arm

General Specifications:

- Monitor mount standards: VESA 75mm, 100mm
- Keyboard pivot range: 180°
- Monitor rotation range: 180°
- Monitor tilt range: >40°
- Vertical monitor adjust: 9.5"
- Vertical arm adjust: 22"
- Weight capacity: 20 lbs
- Work surface size: 11.25" x 22"
- Mouse surface size: 8.5" x 9.65" Left/Right
- Keyboard tray size: 8.75" x 18.5"
- Storage profile: <9.5"
- Standard track: 34"

Optional Accessories:

- 20" extension arm
- Tech box options
- VESA mouse house
- LCD access pack options (including scanner mounts)



Fluid™ ULT Arm
Stowed Profile



AX Series Arm

Monitor Arms

The AX Series Monitor Arm lets you select the combination of components to build your ideal health IT workstation. When price and value matter most, the AX Series provides improved ease-of-use and ensures an efficient EHR process at the point-of-care.

- Designed to provide effortless use through a flexible range of motion that supports patient interaction at the bedside
- Independent vertical keyboard adjustment allows variable relationship space between hand position and monitor
- Fully configurable with articulating and optional fixed arm components
- Lightweight aluminum with hardened finish withstands the rigors of your healthcare environment and maintains its attractive appearance over time
- Trim-line profile under 8" when stowed for care settings that demand compact and functional hardware mounting



AX Series Arm



Efficient physical space requirements keep EHR close at hand without inhibiting clinical workflow or cluttering patient care area.

AX Series Arm

Monitor Arms

General Specifications:

- Standard VESA 75mm, 100mm
- 90° range of articulating arm motion provides 12" of vertical monitor adjustment
- 180° range of lateral motion
- Monitor or keyboard tray tilt in 90° positive or 20° negative direction
- Slim profile under 8" when stowed

Optional Accessories:

- 18" Extender Arm (not available with 16" wall track)
- 20" x 11.5" work surface
- Rotation limiter



AX Series Arm
With Monitor Extender



AX Series Arm
With Keyboard Extender

Cart Monitor Arms

- Available in rear mount to fit a variety of carts
- Provides a flexible mobility system with ergonomic adjustability
- Selection of laptop trays available including secure and lockable options

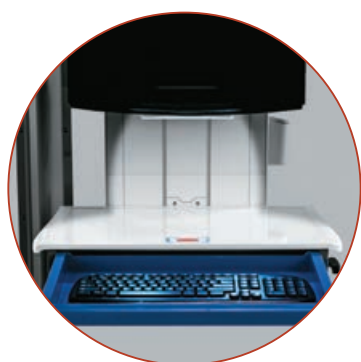


Tandem Arm™ & Slim Line

Wall Mounted Workstations

The Tandem Arm and Slim Line redefine wall-mounted workstations. With dual arms that move in tandem, the Tandem Arm provides superior stability and range of motion; while the work surface facilitates med preparation and supply accessibility. The Slim Line provides a compact solution for discreet computer access and is easily adjusted for sitting or standing use.

- Dual pivot points on the Tandem Arm maximize rotational range of motion
- Generous 21.5" w x 11" d work surface with spill retaining lip
- Task light with auto shut-off illuminates the work surface for nighttime use
- Position height adjustment facilitates sit to stand interaction
- Locked position height adjustability ensures stability and eliminates movement
- Trim-line profile when stored



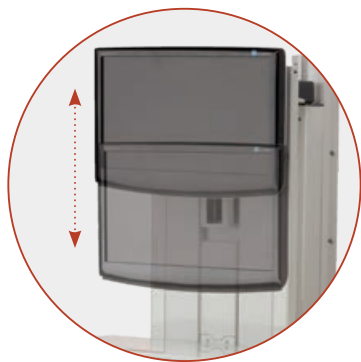
Lighted Worksurface

Task light with auto shut-off illuminates the work surface for nighttime use



Keyboard Drawer Extension

Keyboard drawer extension with integrated wrist rest reduces strain



Monitor Adjustment

Monitor Bracket allows for 5" of vertical monitor height adjustment



Tandem Arm™

US Patent 10,051,956

Tandem Arm™ & Slim Line

Accessories & Specifications



Access Pack

Optional Access Pack organizes essential supplies for medication administration including medication cups, medical tape and alcohol wipes



Premium

Tandem Arm

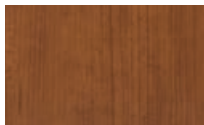


Shown in
Rustic Cherry

Premium

Slim Line

Available Finishes:



Blossom Cherry



Natural Maple



Chocolate Pear



Rustic Cherry



Espresso



Solar Oak

Tandem Specifications

- Generous work surface with spill retaining lip: 21.5"w x 11"d
- Comfort Grip Actuator automatically locks height position for improved stability (premium only)
- Pre-wired USB to Keyboard Drawer (premium only)
- Dual pivot points with 180° rotation
- Shuttle maintains distance from wall during full height adjustment range
- Depth when stowed:
Premium - 7.375"
Standard - 7.125"
- Integrated tech box CPU storage: 2.6"h x 9.9"w x 10"d
7.1 lbs

Slim Line Specifications

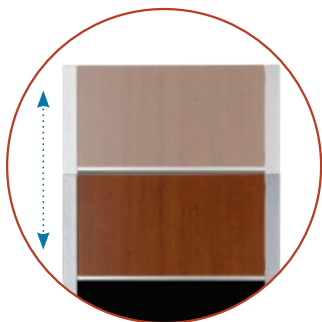
- Generous work surface with spill retaining lip: 21.5"w x 11"d
- Comfort Grip Actuator automatically locks height position for improved stability (premium only)
- Pre-wired USB to Keyboard Drawer (premium only)
- Height Adjustment Brake locks height position and improves stability
- Depth when stowed: 7.375"
- Maximum footprint: 34"h x 25.16"w x 7.375"d
- Monitor adjusts for viewing from multiple directions

423 & 430

Wall Cabinet Workstations

The Wall Cabinet Workstation is designed to provide maximum aesthetic flexibility and best-in-class performance. Innovative features, advanced keyless entry system, and exceptional serviceability make the Wall Cabinet the easy choice for demanding clinical environments.

- Special finishes provide an aesthetic look and feel
- Smooth surfaces, including PIN Code Lock membrane, are easy to clean for improved infection control
- Dedicated cable management channels conceal cables
- Auto on / off task light to reduce visual strain and for nighttime use
- Keyboard drawer extension with integrated wrist rest reduces strain
- Slim profile of under 4" when stowed



Electronic Lift

Available 15" of height adjustment for sit to stand interaction (430 only)



Proximity Sensor

Detects when clinician has walked away and automatically closes the workstation (430 only)



Work Surface

Generous work surface features dedicated pen and mouse storage



Pin Code Locking

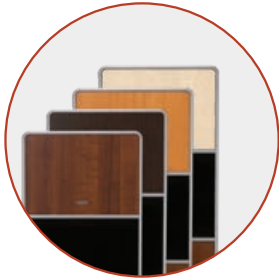
Advanced keyless entry system



430

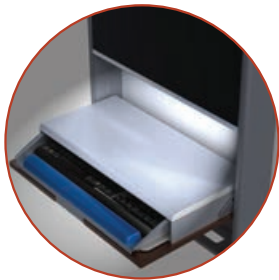
423 & 430

Wall Cabinet Workstations



Finishes

Finishes compliment a wide range of decor



Task Light

Standard auto on/off task light reduces visual strain during nighttime use



Sturdy Frame

Protective outer frame



423

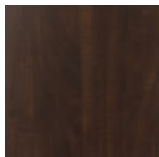
Wall Cabinet Workstation



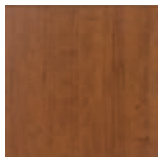
430

Wall Cabinet Workstation

Standard Finish Options



Chocolate Pear



Blossom Cherry



Natural Maple

Finish Options (minimum order*)



Rustic Cherry



Anigre (423)

Specifications

- Internal cable management
- Tech box CPU storage: 2.6"h x 9.9"w x 10"d; 7.1 lbs
- Tech box security: single key lock
- Dual port pre-wired USB to keyboard drawer for keyboard and mouse
- 2 step installation; mounting plate and cabinet
- 423 work surface: 20.5"w x 10"d
430 work surface: 24"w x 8"d
- Integrated wrist rest
- Keyboard extends 14.5" from monitor
- Integrated task light with auto on/off with work surface closure

*Minimum order quantities may be required based on cabinet size and finish selection, please inquire with your Capsa Representative regarding availability

Integrated Medication Cart

This versatile platform for medication control provides your facility a fully integrated system of storage and technology to make your medication management process more efficient. The numerous benefits of the ACi Medication Cart combine to offer maximum flexibility and functionality.

- Flexible platform for a choice of computing options
- Power status display on LCD
- Integrated USB hub
- Large retractable mouse tray
- 104-key keyboard on retractable tray
- Configurable medication storage with 2 bin sizes and 3 drawer sizes
- Keyless access with auto-relocking



Secondary Access

Select from a bar code, mag stripe or proximity card reader to serve as the primary or secondary access requirement



Multiple Drawer Sizes

Your choice of 3", 6", and 10" drawer depths



Keyless Narcotic Storage

Greatly augments security to further optimize control and accountability



Avalo® ACi



Avalo® ACi

Integrated Medication Cart



Avalo® ACMi



Utility Drawers

In 3", 6", and 10" drawer depths for added storage (ACMi only)



Cassette Bins

Cassette bins are available in 5.5" [3-across] and 8" Bin [2-across]



Auto-Lock™

Automatically relocks motionless carts after a specified period of time

Accessory Options



Removable Drawer Tray



Double-Wide 10" Narc Box



Accessory Mounting Bracket



Kendall Sharps Container



Clear Top Mat



Bulk Storage



Kendall Glove Box



Multi-Cavity Storage

Ask your Capsa Representative about ACi cassette transfer carts.

Specialty Carts

CareLink™ Fetal Monitoring Cart

The CareLink™ Fetal Monitoring cart provides both fetal monitoring and a mobile workstation in a single solution. Your choice of medical monitoring system promotes workflow efficiency in labor and delivery departments.



Features

- Dual-swivel monitor mount supports up to 22" monitors
- Stable open shelf supports and secures a variety of Fetal Monitoring systems
- N-Sight™ fleet management for remote asset management
- N-Stride™ steering control for effortless maneuverability and control
- Expansive work surface
- Height adjustable with electronic lift

M38e Phlebotomy Cart

Flexible, mobile Phlebotomy workstation that keeps all of your blood draw supplies close at hand, and enables you to easily transport them throughout the facility. Multiple bin sizes and divider options provide ample storage and smart organization of phlebotomy supplies.



Features

- Large work surface with raised edges and expandable surface feature
- Configurable to meet workflow needs
- Simple electronic height adjustment
- Slim profile for tight care settings and ease of mobility
- Ergonomic adjustments, easy maneuverability
- Increased runtime for improved uptime performance

M38e Registration Cart

Flexible, mobile Registration workstation that enables you to move easily from one patient room to another. The M38e features a large work surface, with a slide out extension for additional work space. Multiple drawer and bin options provide ample storage and smart organization of supplies. Choose from an array of accessories to best accommodate your choice of printers, scanners and electronic signature pads.



Features

- Large work surface with rear utility bins and expandable surface feature
- Configurable with scanner mounts and printer shelves to meet patient registration workflow needs
- Choose from manual or electronic height adjustment
- Slim profile for tight care settings and ease of mobility

Telehealth Carts

M38e Telepresence Cart

The M38e Telepresence Cart is equipped to enable video communication to enhance your telehealth workflow with real-time consultation, connecting doctors with remote patients in real time, increasing access and timeliness to care.



Features

- Optional mounts for video or web camera above the monitor
- Optional I/O Pod for integrating peripherals
- Configurable with your choice of video conferencing and audio equipment
- Storage drawer options accommodate telepresence supplies
- Large work area with expandable surface feature

CareLink™ Telepresence Cart

The CareLink Telepresence cart is equipped to enable video communication to enhance your workflow with real-time consultations. This innovative telehealth workstation accommodates your choice of video conferencing technology enabling doctors and clinicians to connect with their patients.



Features

- Optional I/O Pod for integrating peripherals
- Optional mounts for video or web camera above the monitor
- Configurable with your choice of video conferencing and audio equipment
- Storage drawer options accommodate telepresence supplies
- On-board communication tools for messaging and service requests
- N-Sight™ fleet management for remote asset management

CareLink™ Telemedicine Cart

The CareLink Telemedicine Cart is designed to enable video communication and the use of diagnostic peripherals facilitating virtual care and timely diagnostics. CareLink connects doctors to remote patients in real time, increasing the access and timeliness to care.



Features

- Offers I/O Pod plug-n-play capabilities to integrate medical peripheral cameras and scopes
- Ventilated storage cabinet for housing PCs or Codecs
- Optional storage drawer for diagnostic peripherals
- Optional mounts for video or web camera above the monitor
- Supports single or dual monitor configurations
- On-board communication tools for messaging and service requests
- N-Sight™ fleet management for remote asset management

Med Drawer Configurations

CareLink and M38e computer workstations offer configurable storage and organization with an array of drawer and bin options to address specific workflow needs. Storage options are available in electronic locking to keep medications and supplies secure, or non-locking for general storage.



Locking: FG9M3811
Non-Locking: 1874831



Locking: FG9M3833
Non-Locking: 1874836



Locking: FG9M3812
Non-Locking: 1874832



Locking: FG9M3823
Non-Locking: 1874835



Locking: FG9M3822
Non-Locking: 1874834



Locking: FG9M38DD
Non-Locking: 1874837



Locking: FG9M3813
Non-Locking: 1874833



Locking: FG9M38QQ
Non-Locking: 1874838



Pharmacy Robot
Envelope Drawer
Locking Only:
1779309

Drawer Dimensions

Small Drawer:	4"w x 2"h
Medium Drawer:	6"w x 2"h
Large Drawers:	12.75"w x 2"h
Medium Double Deep:	4"w x 4"h
Large Double Deep:	12.75"w x 4"h
Envelope Drawer:	12.75"w x 8"h

Drawer Options

Flexibility to configure workstation with storage drawers in 3" or 6" depths



3" Drawer

*Electronic lock or
non-locking*



2-3" Drawers

*Electronic lock or
non-locking*



6" Drawer

Electronic lock

Drawer Dimensions

3 inch:	3"w x 18.25"h
6 inch:	6"w x 18.25"h

Accessories

Capsa Healthcare's computer workstations are designed to accept a wide variety of accessories to customize your workflow and organization.



*Access Pack
for med cups,
tape and
alcohol wipes
and/or scanner
holder*



*Tilt Swivel
Monitor Mount*



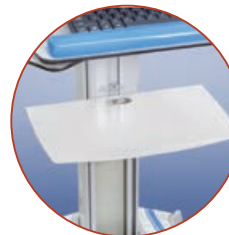
*Rotating Height
Adjustment
Monitor Mount*



*Forked Scanner
Holder*



Task Light



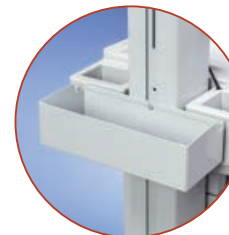
*Printer
Shelves*



*Barcode Scanner
Shelves and
Scanner Holder
Options*



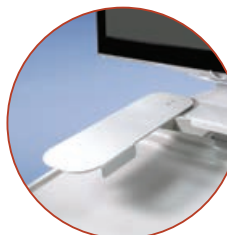
Waste Bin



*Zebra Printer
Holder*



*Bin with Key
Locking Lid*



*Document
Scanner Shelf*



Tablet Holder



*Wire Basket
(standard or
extra large)*



*Infection
Control Wipes
Bracket*



*Mounting Plate
for Sharps
Bracket and
Accessory Bins*

Check with your Capsa Healthcare regional sales manager about these and more accessories specific to your chosen point-of-care solution.

Warranty Service & Support

Capsa Healthcare products are engineered and tested to perform in a 24/7 clinical environment. However, should you require support for any service issues, Capsa provides a comprehensive service program focused on rapid resolution to keep your cart fleet operational and your clinicians supported.

- Large network of certified field support technicians
- Next business day parts and components replacement
- On-site engineering, installation, and implementation support available

NEXT
BUSINESS DAY
PARTS

**ON-SITE
SUPPORT**

**2-HOUR
RESPONSE
TIME**

Contact your **Capsa Sales Representative** for more detailed information about Capsa's warranty and service programs.





Additional Information

Ask Capsa Healthcare for more information about our benchmark solutions for point-of-care mobile computing, wall mount products, or advanced medication management systems.



Web Site

Visit the Capsa website to learn more about our comprehensive line of products that support your healthcare IT program. The website provides in-depth information about product features, options and specifications that will give you the insight you need to find the perfect solution for your facility.

www.CapsaHealthcare.com



Email

To request more information about Capsa products or to learn more about regional representation or distribution partners in your area, simply send us an email:

Info@CapsaHealthcare.com



Phone

If you have specific questions and wish to speak with someone directly, contact Capsa Healthcare and ask for Customer Service.

800.437.6633



Certified ISO
27001:2013



Certified ISO
9001:2015

Elevating performance,
every day.



CAPSAHEALTHCARE

www.CapsaHealthcare.com | 800.437.6633

4253 NE 189th Avenue
Portland, OR 97230



Certified ISO
27001:2013



Certified ISO
9001:2015