



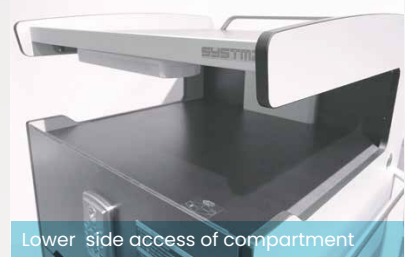
designed and manufactured in Singapore

# BS-16 CT-16

Integrated Bedside  
Cabinet with  
Overbed Table

## Feature Highlights

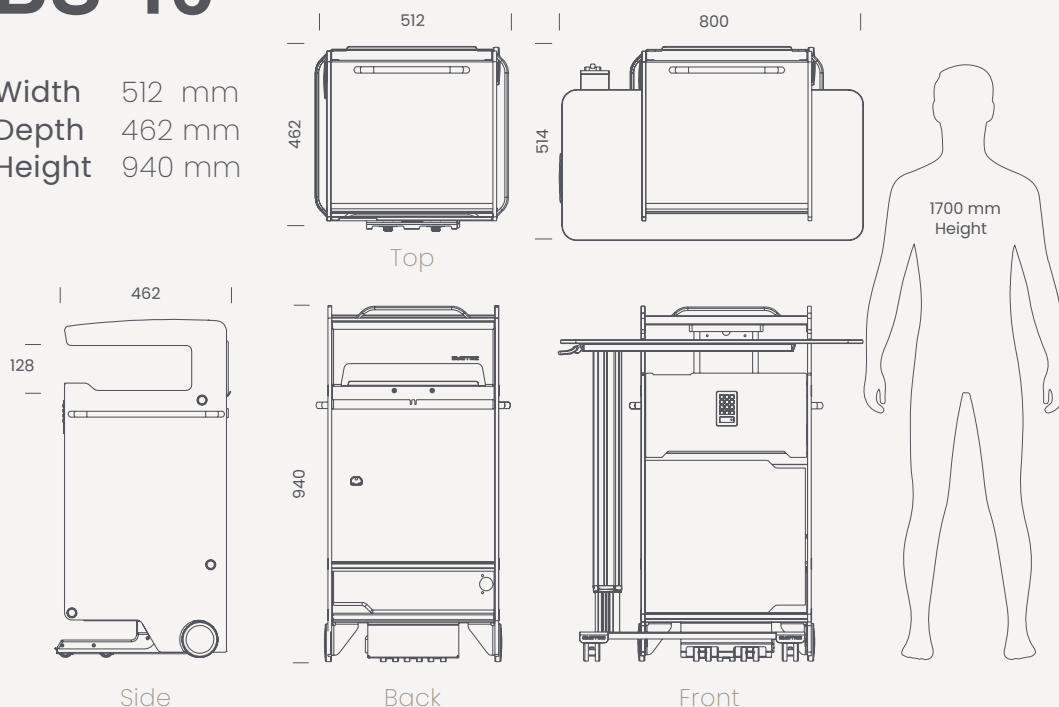
- Space saving integrated bedside cabinet with table
- Modern design. Future proof modular construction
- Anti-microbial, in compact laminate (Phenolic) material
- Durable moisture resistant non-rotting material
- Rounded corner with raised worktop edges to contain spillage
- Easy side access to lower tier storage compartment
- Digital keypad lock with backlit with mastercard override.
- Drawer with ease of opening from bed
- Soft closing drawers and swing doors
- Swing door compartment with left or right opening
- Front 40mm locking castors with oversize lever
- Rear 100mm flushed panel castor
- Easy to maintain with means to replace all faulty parts
- Auto nightlight and USB charging part (optional)



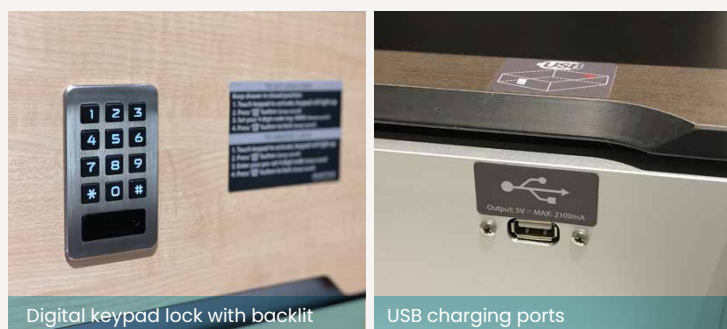
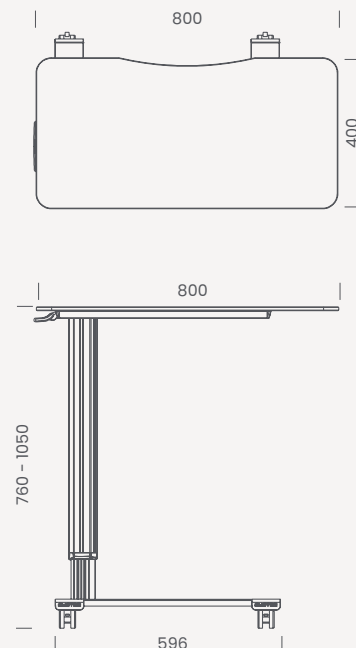
## Technical Specifications

### BS-16

Width 512 mm  
Depth 462 mm  
Height 940 mm



### CT-16



## Customisation

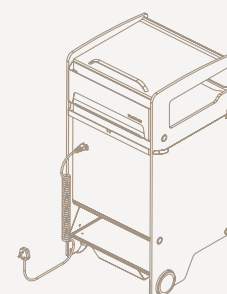
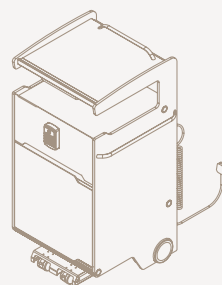
This unit can be customised to your preference in colour, dimensions and features. Feel free to contact our sales department for your needs.

- Size
- Colour
- Finishes
- Hardware



## Optional Features

- Key lock or manual combination lock
- Digital lock with backlit with mastercard override
- Side towel rails left and right
- Premium drawer runner – Blum
- USB charging ports inside drawer with power coil cord
- Auto nightlight sensor activated
- Overbed table worktop with flip mirrors
- Shoe compartment with stainless steel base tray
- Special request for high-matching colour



### Systemz Pte Ltd

16 Sungei Kadut Way  
Singapore 728793  
+65 6465 0387 (Main)  
+65 6465 0656 (Fax)  
www.systemz.sg  
info@systemz.sg

designed &  
manufactured



Singapore