



# COMPUTING WORKSTATIONS AND POINT-OF-CARE PRODUCTS

  
**CAPSAHEALTHCARE**

Medication Carts  
Mobile Computing  
Wall Arms

BESPOKE MODULAR SOLUTIONS

DISTRIBUTED BY  
**SYSTEMZ**

Elevating performance,

# every day.

Through inventive product design and commitment to customer support, Capsa Healthcare has been a market leader for over 50 years.





Our job is to help you do yours. **Capsa Healthcare** is built upon a 50-year foundation of experience and innovation designed to improve the organization, efficiency, and accuracy of healthcare providers. We strive to elevate your performance by offering innovative solutions that positively impact clinical effectiveness in healthcare environments. We understand the delivery of healthcare cannot wait, which is why we continually invest in product development, technology innovation, service, and support to make sure we are the logical choice for products that elevate the performance of healthcare delivery at the point-of-care.

**Capsa Healthcare** provides an extensive portfolio of mobile computer carts, point-of-care wall mount products, and service programs designed to optimize your health IT program. With extended cart runtime and simple serviceability, Capsa's mobility solutions improve user experience and support better clinical workflow.

Humanscale<sup>®</sup>  
HEALTHCARE

**HumanscaleHealthcare** *is now part of* **Capsa Healthcare**



Easy to use healthcare  
computing workstation,

# Trio

It's simple to use with thoughtful tools built-in to  
facilitate workflow, save time, and support an  
efficient clinical process.





# Computing Workstations

**The Trio Computing Workstation** combines innovative advancements with flexibility to meet the needs of clinical users today and into the future. Trio offers a refined, ergonomic design coupled with ease of use, maneuverability, and the scalable, reliable GoLiFe power system.

- Slim profile, improved mobility and enhanced features
- Flexible hybrid power system for extended mobile runtime
- Configurable with an array of drawer and bin options
- New updated N-Sight™ Fleet Management software with enhanced user management tools



## Simple Mobility

*Slim profile, lightweight platform with enhanced steering assist for easy mobility and control*



## Storage Flexibility

*Supports a variety of storage options including MaxBin™ storage module*



## Intuitive Power

*NEWGoLife scalable power system fits any runtime need*



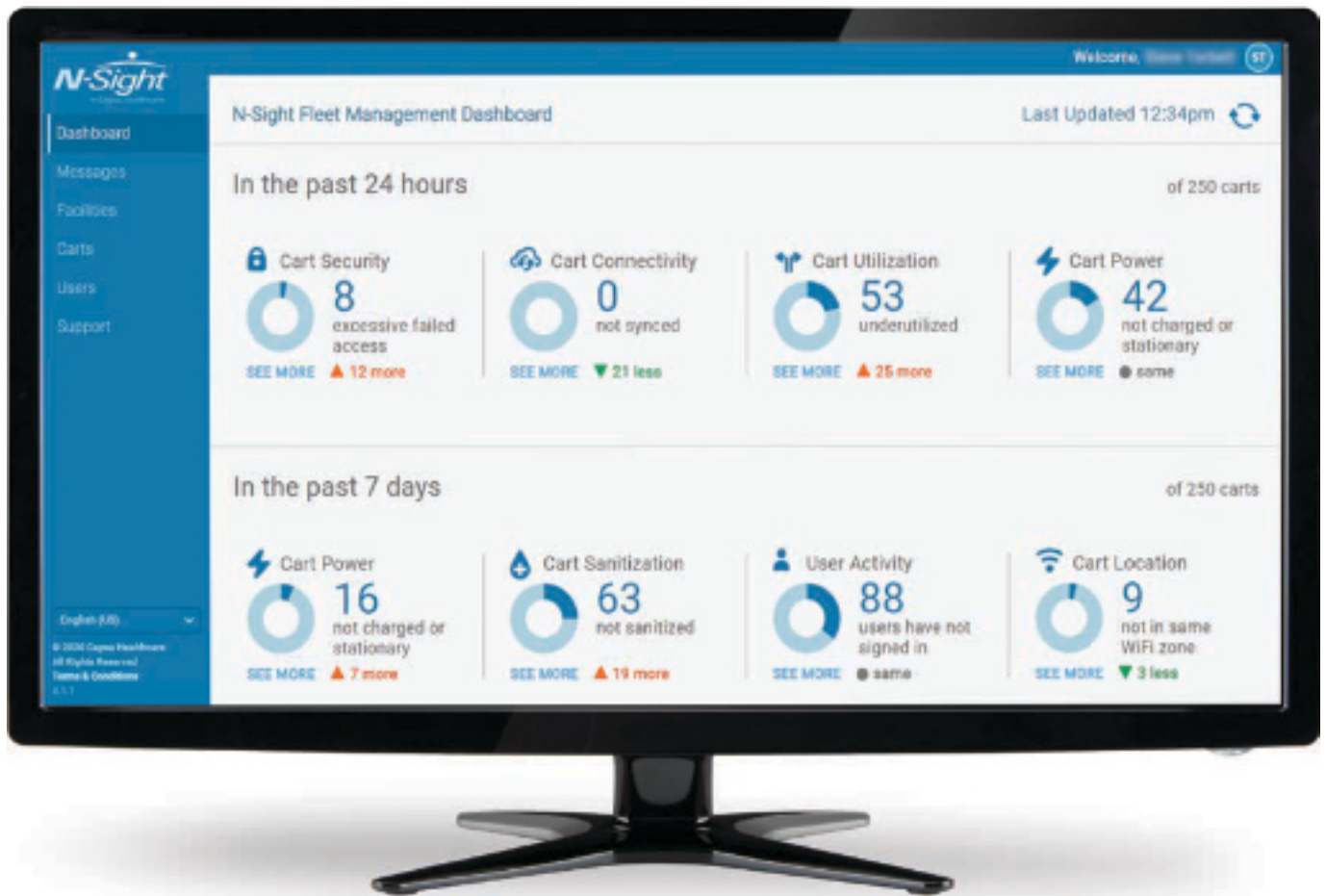
**Trio™ Computing Workstations**



# Fleet Management

## N-Sight™

N-Sight facilitates asset utilization through optimizing fleet deployment and maximizing the uptime and availability of carts (*Trio & CareLink only*).



▼ **N-Sight™** helps you monitor your fleet.

# Optimize Your Fleet

N-Sight helps facilities improve asset utilization, maximize fleet performance and value, and help prevent issues before they impact clinical workflow. The cloud-based N-Sight software features analytics to support optimized fleet utilization and simplified user management tools.

## Robust Cloud Solution

N-Sight is a cloud based platform with no client software to install on facility desktop workstations or cart-based computers.

## Maximize Uptime and Availability

Maintain cart availability while proactively monitoring cart fleet power levels and performance. Analytics provide visibility into power usage and allow adjustments to technology settings to maximize cart runtime.

## Right-Size Fleet

Evaluate cart usage patterns and peak needs to determine if the number of carts deployed meet current clinical demands. Identify opportunities to redeploy carts to locations with greater needs, optimizing asset utilization.

## Remote Fleet Management

N-Sight enables remote management of cart user groups, PIN codes, and user permissions. Save time finding lost carts with cart locator\*, based on the last wireless access point.

## Configuration Settings

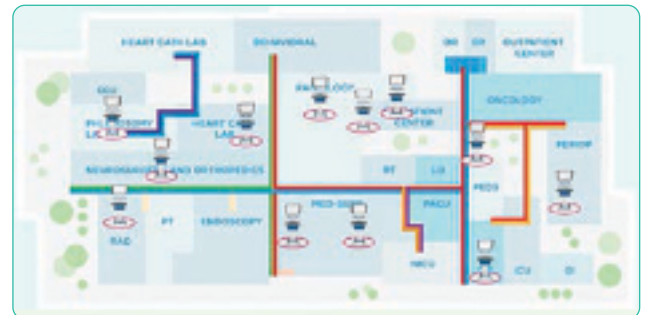
Centralized management of cart configurations for displays & alerts, PINs, notifications and service requests.

## Integration with Hospital Systems

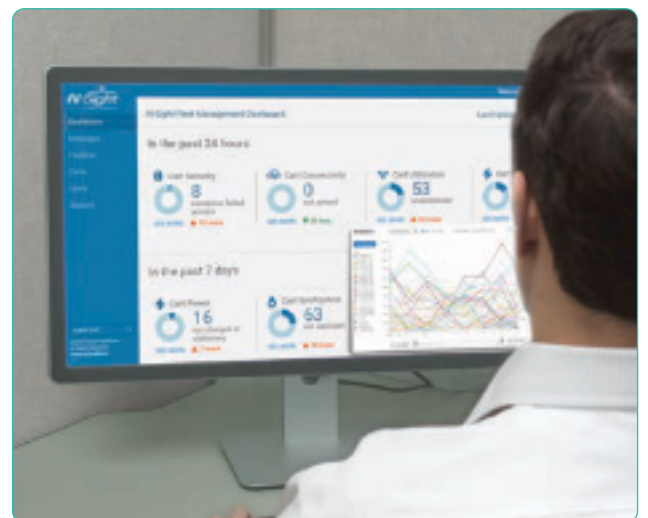
To facilitate communication between clinicians, IT, and other hospital departments, N-Sight offers integration with hospital systems that can accept email/SMTP input.



## Optimize Your Fleet



*Cart Locator\**



## Proactive Monitoring

*\*Cart Locator available with Trio*

## Features & Models



### N-Sight™ Fleet Management

Enhanced N-Sight software to monitor and optimize fleet utilization



### Thoughtful Tools

Control center provides simple touch screen navigation to informative tools



### Personal Ergonomics

Personally adjustable for optimal user comfort including memory presets



**Trio**  
Document Model



**Trio**  
With Standard Bin



**Trio**  
With MaxBin™

### General Specifications:

- **Footprint\***: 16.53" x 17.64" (41.9 x 44.8 cm)
- **Starting Weight** (without battery): 95.8 lb (43.45 kg)
- **Battery weights**: 5.6 – 14.4 lbs (2.54 – 6.53 kg)
- **Work Surface Height Range**: 33.5" – 49.5" (85 – 125.7 cm)
- **Keyboard Height Range**: 24.25" – 43.25" (61.6 – 109.8 cm)
- **Monitor (center) Height Range**: 45" – 66.5" (114.3 – 168.9 cm)
- **Primary Work Surface Size**: 17" W x 10.5" D (43.1 x 26.6 cm)
- **Expanded Work Surface**: 10.875" W x 9.175" D (27.6 x 23.3 cm)
- **CPU Cavity**: 17.0" W x 13.25" D x 3.0" H (43.8 x 33.65 x 7.62 cm)

\* Expanded base size required for select storage configurations.  
Inquire with your Capsa representative for more information.

### Optional Accessories:

- Access pack
- Wire basket
- Scanner mount options
- Printer shelves
- Waste bin

See page 36 for more accessories

### Flexible GoLiFe™ Power System & Battery Options

| Power System                  | Capacity (Wh) | Runtime (hrs) at 30w avg use | Ah (256wh) Swappable Battery Runtime | Total Runtime (hrs) In-Base/ Swappable Combined |
|-------------------------------|---------------|------------------------------|--------------------------------------|---|
| 20 Amp Hour - Lightweight     | 256           | 7.8                          | 7.8                                  | 15.6  |
| 40 Amp Hour - Medium          | 512           | 15.5                         | 7.8                                  | 23.3  |
| 51.2 Amp Hour - High Capacity | 655           | 19.8                         | 7.8                                  | 27.6  |

Lithium Iron Phosphate for all battery options





# Storage Options

## Standard Bins for Trio™, M38e and CareLink™

Configure the **Trio**, **M38e** or **CareLink** with standard drawer and bin options in your choice of electronic locking or non-locking to meet specific workflow, storage and security needs. Available in gray or blue.

### Sample Configurations



### Standard Bin Dimensions



**3.875" Small Bin**  
3.875" w x 2.375" h x 10.5" d  
(9.84 x 6.03 x 26.67 cm)

**6.375" Medium Bin**  
6.375" w x 2.375" h x 10.5" d  
(16.19 x 6.03 x 26.67 cm)

**12.75" Wide Bin**  
12.75" w x 2.375" h x 10.5" d  
(32.38 x 6.03 x 26.67 cm)



**6.375" Medium Deep Bin**  
6.375" w x 4.9375" h x 10.5" d  
(16.19 x 12.54 x 26.67 cm)

**12.75" Wide Deep Bin**  
12.75" w x 4.9375" h x 10.5" d  
(32.38 x 12.54 x 26.67 cm)

**12.75" Envelope Drawer**  
12.75" w x 8" h x 10.5" d  
(32.38 x 20.32 x 26.67 cm)

Standard bins also available in blue



# Storage Options

## MaxBin™ System for Trio™, M38e and CareLink™

The MaxBin system provides high-capacity storage for medication and supplies, in your choice of electronic locking or non-locking bins. The MaxBin's unique configurable design provides options for one to 3-tier designs with **Trio**, and up to 6-tiers with **CareLink**. Contact your Capsa representative to discuss configuration options for **M38e**.

### Sample Configurations



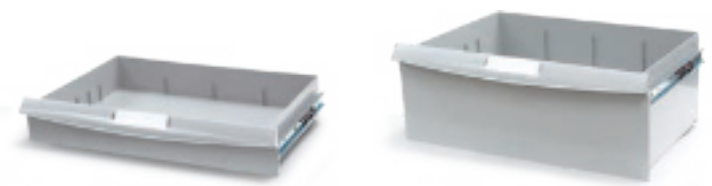
### MaxBin Dimensions



**4" Small Bin**  
4" w x 2.66" h x 11.86" d  
(10.16 x 6.75 x 30.12 cm)

**5.5" Medium Bin**  
5.5" w x 2.66" h x 11.86" d  
(13.97 x 6.75 x 30.12 cm)

**8.6" Wide Bin**  
8.6" w x 2.66" h x 11.86" d  
(21.59 x 6.75 x 30.12 cm)



**16.6" Extra Wide Drawer**  
16.6" w x 2.66" h x 11.86" d  
(42.16 x 6.75 x 30.12 cm)

**16.6" Extra Wide Deep Drawer**  
16.6" w x 6.15" h x 11.86" d  
(42.16 x 15.62 x 30.12 cm)



**Standard Bins**  
Shown on Trio



**MaxBin System**  
Shown on Trio

### M38e Drawer Options

Flexibility to configure workstation with storage drawers in 3" or 6" heights. Available in electronic lock or non-locking.



### Drawer Dimensions

**3" – 13.875" w x 3" h x 13.875" d (35.24 x 7.62 x 35.24 cm)**  
**6" – 13.875" w x 6.75" h x 13.875" d (35.24 x 17.145 x 35.24 cm)**

Easy to use healthcare  
computing workstation,

# M38e

With updated features that provide superior ergonomics, enhanced ease-of-use, and expanded storage flexibility, the M38e maximizes clinical efficiency and elevates the performance of your health IT program.





# M38e

## Computing Carts

**The M38e** from Capsa Healthcare is one of the most proven point-of-care computing cart in healthcare. With updated features that provide superior ergonomics, enhanced ease-of-use, and expanded storage flexibility, the M38e maximizes clinical efficiency and elevates the performance of your health IT program.

- Smaller profile glides through tight care settings
- Large work area with additional 100 square inch expandable surface feature
- Increase battery runtime for consistent uptime performance
- Large CPU storage area for expanded tech organization



### Ergonomic Adjustability

*Simple adjustments for individual preference and ergonomic comfort*



### Secure

*Intuitive locking and security system*



### Storage

*Flexibility to configure workstation with storage drawers or bins*



**M38e**



## Features & Models



### Adaptable

*Configure to meet specific department or workflow needs*



### Flexible Work Surface

*Expands for additional workspace*



### Powerful Battery

*Efficient Li-ion power provides extended runtimes*



**M38e**

Document Model



**M38e**

XP Model



**M38e**

RX Model

### General Specifications:

- **Base Size:** 17"x17" (43.18 x 43.18 cm)
- **Weight:** Configurations starting at 87.5 lbs
- **Cart Height:** 49.3" to 65" (125.22 to 165.1 cm)
- **Work Surface:** 17.25" W x 10.25" D (43.81 x 26.03 cm)
- **Casters:** 4" or 5" standard or directional casters
- Adjustable height, tilt/swivel monitor mount and keyboard tray options
- Enhanced lighting features to assist with navigating and working in darkened areas

### Optional Accessories:

- Access pack
- Wire basket
- Scanner mount options
- Printer shelves
- Waste bin

*See page 36 for more accessories*

| Power System                             | Non-Powered               | AC Powered Lithium                             |
|--|---------------------------|--|
| Target Run-Time (typical configuration): | Laptop battery only       | 9-12 Hours/Charge                              |
| Charge Time from Empty:                  | Laptop charge time only   | 2.5 Hours                                      |
| Battery Life Cycles:                     | N/A                       | 2500+  |
| Recommended Technology:                  | Laptop (up to 15" screen) | Laptop (folded), thin client, or All-In-One PC |



# Accessories

## Storage Selection

### Your Storage Selection

Add additional storage options from the right.



### Your Storage Selection

Add additional storage options from the right.

4 Drawer Vertical Expansion Set



### Customisable Drawer Options



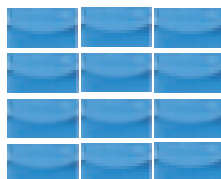
## Customisable Drawer Options

M38 RX Mobile  
Medication Trolleys

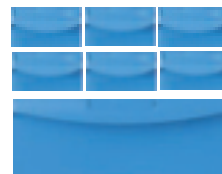


RX 4-Level Configuration

4a



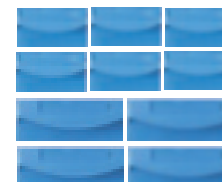
4b



4c



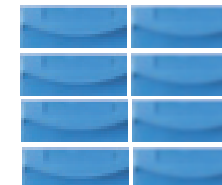
4d



4e



4f



Xp 2-Level Configuration

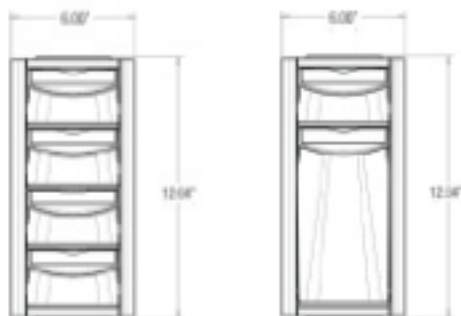
2a



2b



Side Expansion Pack



1.1- 98 W x 272 D x 50 H



1.2- 156 W x 272 D x 50 H



1.3- 325 W x 272 D x 50 H



2.2- 156 W x 272 D x 120 H



2.3- 325 W x 272 D x 120 H



1.3- 98 W x 272 D x 200 H  
(vertical expansion kit only)





# Accessories

## Side Expansion Pack

### Your Storage Selection

Add additional storage options from the right.

4 Drawer Vertical Expansion Pack



4 Drawer Vertical Expansion Pack

2 Drawer Vertical Expansion Pack

Locking Side Bin

### Product Description

The Vertical Expansion Pack can be added to the side of an M38 RX in order to provide additional storage for necessary items at the point of care.

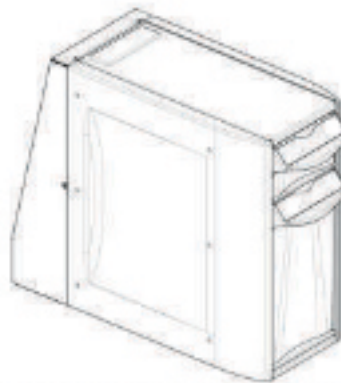
### Features and Benefits

Storage of items on cart allows for a more efficient workflow.  
Drawers maintain a locking mechanism in order to ensure the security of items.  
Option of two or four drawers cater to user's storage preferences.

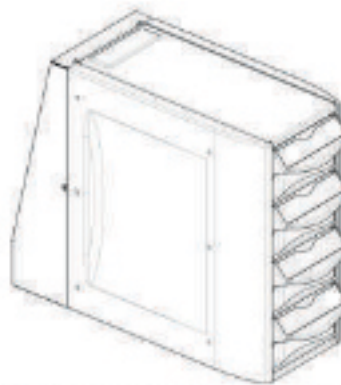
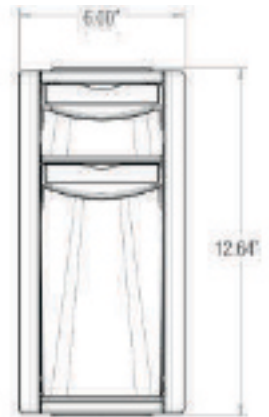
### Specifications

Accented on all M38 RX Carts  
Dimensions: 12.64" h x 6.00" w x 15.65" d

Note: The 4 Drawer Expansion Pack Module has 4 small drawers, whereas the 2 Drawer Expansion Pack has 1 small drawer and 1 three-deep tall drawer.



Vertical Expansion Pack 2 Drawer Module



Vertical Expansion Pack 4 Drawer Module



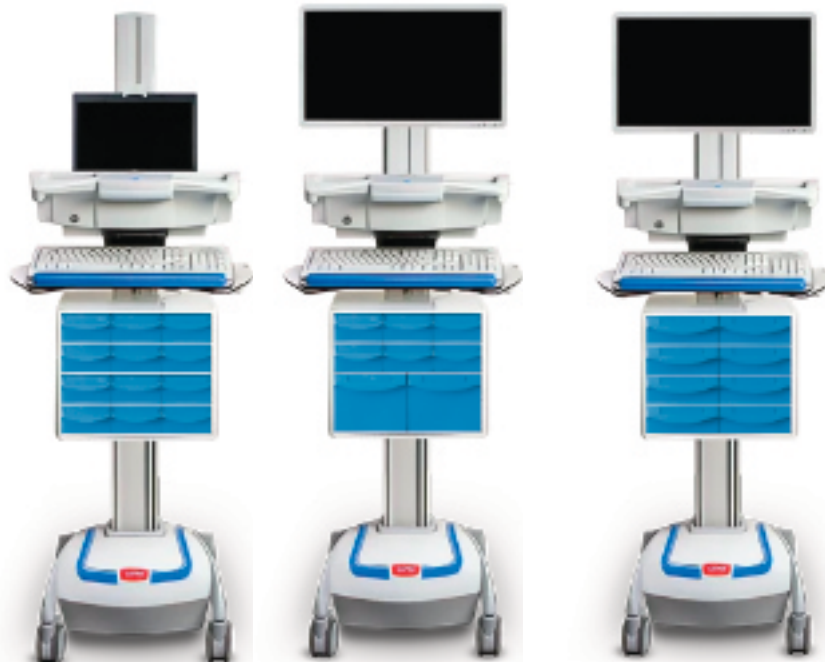
# Accessories

## Side Expansion Pack

XP Locking  
2 Levels



XP Locking  
2 Levels





## Side Expansion Pack

RX + XP  
Modules  
6 Levels



RX + RX  
Modules  
8 Levels



# Possible Configuration

Deployment in Singapore by Systmz





# Accessories

## Trio™, CareLink™ & M38e Accessory Options

Capsa Healthcare's **Trio**, **CareLink**, and **M38e** computer workstations are designed to accept a wide variety of accessories to customize your workflow and organization.



Access Pack  
for med cups,  
tape and alcohol  
wipes and/or  
scanner holder



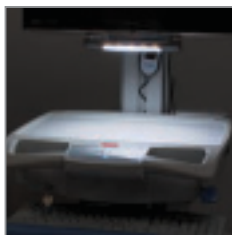
Tilt Swivel  
Monitor Mount



Wire Basket  
(standard or extra  
large)



Forked Scanner  
Holder



M38e Task Light



Printer  
Shelves



Barcode Scanner  
Shelves and  
Scanner Holder  
Options



Waste Bin



Zebra Label  
Printer Holder



Trio Notification  
Light



Document  
Scanner Shelf



Tablet Holder



PDI Mount  
Bracket



Caviwipe  
Mount Bracket



Mounting Plate  
for Sharps  
Bracket and  
Accessory Bins

*Check with your Capsa Healthcare regional salesmanager about these and more accessories specific to your chosen point-of-care solution.*

## CareLink™ Fetal Monitoring Cart

*The CareLink™ Fetal Monitoring cart provides both fetal monitoring and a mobile workstation in a single solution. Your choice of medical monitoring system promotes workflow efficiency in labor and delivery departments.*



### Features

- Dual-swivel monitor mount supports up to 22" monitors
- Stable open shelf supports and secures a variety of Fetal Monitoring systems
- N-Sight™ fleet management for remote asset management
- N-Stride™ steering control for effortless maneuverability and control
- Expansive work surface
- Height adjustable with electronic lift

## Phlebotomy Cart

*Configure Trio or M38e as a flexible, mobile Phlebotomy workstation that keeps all of your blood draw supplies close at hand, and enables you to easily transport them throughout the facility. Multiple bin sizes and divider options provide ample storage and smart organization of phlebotomy supplies.*



### Features

- Large work surface with raised edges and expandable surface feature
- Configurable to meet workflow needs
- Simple electronic height adjustment
- Slim profile for tight care settings and ease of mobility
- Ergonomic adjustments, easy maneuverability
- Increased runtime for improved uptime performance

## Registration Cart

*Configure Trio or M38e for a flexible, mobile workstation that enables you to move easily from one patient room to another. Both platforms feature a large work surface, with a slide out extension for additional work space. Multiple drawer and bin options provide ample storage and smart organization of supplies. Choose from an array of accessories to best accommodate your choice of printers, scanners and electronic signature pads.*



### Features

- Large work surface with rear utility bins and expandable surface feature
- Configurable with scanner mounts and printer shelves to meet patient registration workflow needs
- Choose from manual or electronic height adjustment
- Slim profile for tight care settings and ease of mobility



## Telepresence Cart

*Equip the Trio or M38e workstation to enable video communication and enhance telehealth workflow with real-time consultation, connecting doctors with remote patients in real time, increasing access and timeliness to care.*



### Features

- Optional mounts for video or web camera above the monitor
- Optional I/O Pod for integrating peripherals
- Configurable with your choice of video conferencing and audio equipment
- Storage drawer options accommodate telepresence supplies
- Large work area with expandable surface feature

## CareLink™ Telepresence Cart

*The CareLink Telepresence cart is equipped to enable video communication to enhance your workflow with real-time consultations. This innovative telehealth workstation accommodates your choice of video conferencing technology enabling doctors and clinicians to connect with their patients.*



### Features

- Optional I/O Pod for integrating peripherals
- Optional mounts for video or web camera above the monitor
- Configurable with your choice of video conferencing and audio equipment
- Storage drawer options accommodate telepresence supplies
- On-board communication tools for messaging and service requests
- N-Sight™ fleet management for remote asset management

## CareLink™ Telemedicine Cart

*The CareLink Telemedicine Cart is designed to enable video communication and the use of diagnostic peripherals facilitating virtual care and timely diagnostics. CareLink connects doctors to remote patients in real time, increasing the access and timeliness to care.*



### Features

- Offers I/O Pod plug-n-play capabilities to integrate medical peripheral cameras and scopes
- Ventilated storage cabinet for housing PCs or Codecs
- Optional storage drawer for diagnostic peripherals
- Optional mounts for video or web camera above the monitor
- Supports single or dual monitor configurations
- On-board communication tools for messaging and service requests
- N-Sight™ fleet management for remote asset management

Ultra-lightweight compact profile cart

# SlimCart

The SlimCart is designed for safe use in general patient areas for the purpose of clinical data entry and retrieval and medication delivery



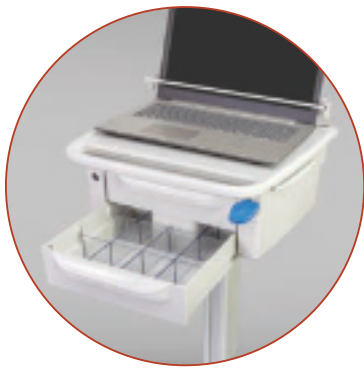


# SlimCart™

## Mobile Documentation Cart

The non-powered, ultra-lightweight SlimCart™ glides easily through tight care settings, providing a flexible, cost-effective solution for mobile documentation. The compact profile and 4" casters allow for simple mobility through doorways, in patient rooms or in hallways. The SlimCart™ provides a generous work surface with a bi-directional slide-out mouse surface and is configurable with your choice of technology.

- Configurable with your choice of laptop, tablet, or lightweight monitor
- Ultra lightweight, starting at just 27 pounds
- 15.35" w x 16.73" d compact profile for maneuvering in tight spaces
- Flexibility to configure with one or two storage drawers



### Storage Drawers

*Optional single or dual locking removable drawers for efficient and secure storage*



### Slim Profile

*Lightweight, compact size maneuvers easily through tight spaces*



### Configurable

*Configurable with your choice of laptop, tablet or lightweight monitor*



*Ultra-lightweight, starting at just 27 pounds!*

**SlimCart™**

Shown with laptop



# SlimCart™

## Flexible Configurations

Every facility's mobile documentation needs are different. That's why the SlimCart™ is designed to be flexible and easily configured to suit your technology and clinical workflow requirements.



**Laptop**  
Configuration



**Tablet**  
Configuration



**Monitor**  
Configuration

The SlimCart™ mobile documentation cart is designed to accept a wide variety of accessories.



Removable Bins



Laptop Security Bar



Scanner Holder



Power/CPU Holder



Wire Basket



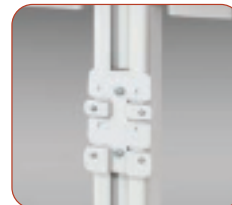
Scanner Shelf



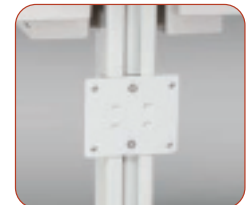
Blank Cover Plates



Scanner Mount Plate



PDI Mount



CaviWipe Mount

*Check with your Capsa Healthcare regional sales manager about these and other accessories specific to your desired solution*

### General Specifications

**Starting Weight:** 27 lbs (12.25 kg)

**Height Range:** 33.25" to 49.5" (84.45 to 125.73 cm)

**Adjustment Range:** 16.25" (41.275 cm)

**Footprint:** 15.35" – 16.02" W x 16.73" D (39 – 40.69 x 42.49 cm)

**Work Surface Area:** 14.52" W x 12.35" D (36.88 x 31.37 cm)

**Work Surface-Outer Dims:** 17.28" W x 20.39" D (43.89 x 51.79 cm)

**Drawer-Inner Dims:** 9.6" W x 8"-10.8" D x 2.7" H  
(24.38 x 20.32-27.43 x 6.85 cm)

**Casters:** 4" (front locking)

**Lift Type:** Manual

**Display Max Weight:** 8 lbs

*Contact your Capsa Sales Representative for more detailed information about SlimCart™*

Better Design, Better Care

# V6 Wall Station

The V6 wall station makes computer use comfortable and convenient, while helping caregivers prioritize their patients.





# Humanscale<sup>®</sup> | V6™ Wall Station

HEALTHCARE

## Wall Mounted Workstations

The **V6 TechnologyWall Station** combines exceptional space-savings with ergonomic design for comfortable caregiver computer use, whether seated or standing.

A range of ergonomic adjustments allows caregivers to easily position for a healthy computing experience and facilitates their engagement with patients.

- Flexible monitor arms ensure technology never gets in the way of patient-caregiver interactions
- Easily customizable with numerous monitor and keyboard arm lengths
- Choose an accessory mount or rail to support peripheral shelves and mounts for gloves, wipes, and other common items
- Features a sleek, sustainable aluminum design, neutral color palette, and streamlined aesthetic
- Cable management system and wipe-clean finish are designed for easy cleaning to ensure effective infection control



### Adjustable

*Flexible monitor arms facilitate patient-caregiver interactions*



### Configurable

*Easily customizable to fit care space - with or without extender arms*



### Ergonomic Design

*Encourages comfortable and convenient computer use*

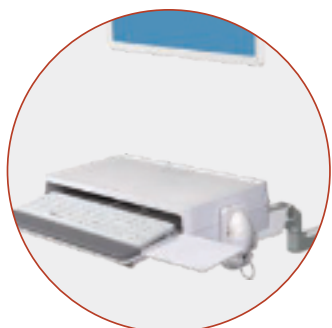


**V6 Workstation**

# Humanscale<sup>®</sup> | V6™ Wall Station

HEALTHCARE

## Wall Mounted Workstations



### V/Desk 2

*NEW V/Desk 2,  
next generation  
keyboard  
platform*



### Slim Profile

*When stowed  
maximizes  
space and  
function*



### Ergonomic Design

*Full height  
adjustability  
and convenient  
sit-stand  
functionality*



V6 with Solo Arm

## Accessory Options



V/Desk 2



Glove Box Holder



Track Mounted CPU  
holder
















CPU Cradle

*See page 38 for additional accessory options*

# Humanscale® | Accessories

## V6™ Accessory Options

The **V6** wall workstation accepts a variety of accessories to optimize your workflow. Check with your Capsa Healthcare regional sales manager about these and more accessories specific to your wall mount solution.

|   |   |   |
|---|---|---|
|    |    |    |
| <b>VPS-S27</b>  | <b>VPS-S27</b>  | <b>VPV-19H</b>  |
| Solo Accessory Rail Mount with 19" Rail   | Solo Accessory Rail Mount with 27" Rail   | VESA Accessory Rail Mount with 19" Rail   |
|    |    |    |
| <b>VPV-27H</b>  | <b>VPA-SC-BKT</b>   | <b>VPA-HD-SNT</b>   |
| VESA Accessory Rail Mount with 27" Rail   | Rail Mounted Scanner Bracket  | Rail Mounted Hand Sanitizer Holder  |
|  |  |  |
| <b>VPA-S-CNT</b>  | <b>VPA-GB-HLD</b>   | <b>V6WC</b>   |
| Rail Mounted Sharps Container Holder  | Rail Mounted Glove Box Holder   | V6 Wall Mounted CPU Holder  |
|  |  |  |
| <b>HCVESADD</b>   | <b>V6TCC</b>  | <b>VDK - V6</b>   |
| Drop Down VESA Plate  | V6 Track/Wall Mount CPU Cradle  | V/Desk for V6   |
|  |  |  |
| <b>V6VD2S</b>   | <b>VPA-CH-HLD</b>   | <b>VPA-SS</b>   |
| V/Desk 2 for V6   | Rail Mounted Chart Holder   | ViewPoint Static Accessory Shelf  |

Flexible Wall Arm Workstations

# Fluid Wall Arm

The Fluid Arms provide a flexible and comfortable work station that supports either seated or standing interactions.





# Fluid™ Wall Arms

## Wall Mounted Workstation

**The Fluid Wall Arms** are designed to provide maximum stability, flexibility, and functionality for clinical documentation and patient interaction in any healthcare environment. The Fluid ULT arm supports a total weight capacity up to 20 pounds, while the Fluid UHD supports up to 35 pounds.



### Easy to Organize

*Expansive work surface with left/right mouse surface and enclosed keyboard storage*



### Maximum Extension

*Optional extension arm provides up to 62" of reach that allows closer patient engagement*



### Easy to Adjust

*22" in vertical arm adjustment with 180° independent monitor and keyboard rotation*

- Independent monitor and keyboard rotation of 180°
- 22" in vertical arm adjustment with increased lower range supports seated or standing patient interactions
- For maximum extension, an optional extension arm to provide 62" of reach into care environment
- Slim profile under 9.5" when stored to maximize space
- Allow for mounting onto previously installed industry compatible tracks or supplied 34" track



Fluid™ ULT Arm

### General Specifications:

- **Monitor mount standards:** VESA 75mm, 100mm
- **Keyboard pivot range:** 180°
- **Monitor rotation range:** 180°
- **Monitor tilt range:** >40° (101.6 cm)
- **Vertical monitor adjust:** 9.5" (24.13 cm)
- **Vertical arm adjust:** 22" (55.88 cm)
- **Weight capacity:** ULT up to 20 lbs (9.07 kg)  
UHD up to 35 lbs (15.87 kg)
- **Work surface size:** 11.25" x 22"  
(28.57 x 55.88 cm)
- **Mouse surface size:** 8.5" x 9.65" Left/Right  
(21.59 x 24.51 cm)
- **Keyboard tray size:** 8.75" x 18.5"  
(22.22 x 46.99 cm)
- **Storage profile:** <9.5" (86.36 or 121.92 cm)  
34" or 48" track options (86.36 or 121.92 cm)



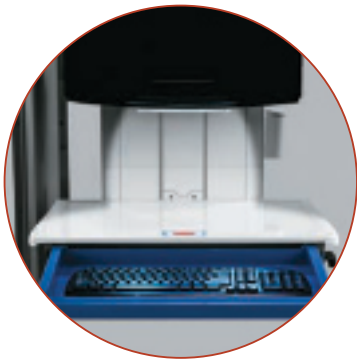


# Tandem Arm™ & Slim Line

## Wall Mounted Workstations

**The Tandem Arm and Slim Line** redefine wall-mounted workstations. With dual arms that move in tandem, the Tandem Arm provides superior stability and range of motion; while the work surface facilitates med preparation and supply accessibility. The Slim Line provides a compact solution for discreet computer access and is easily adjusted for sitting or standing use.

- Dual pivot points on the Tandem Arm maximize rotational range of motion
- Generous 21.5" w x 11" d work surface with spill retaining lip
- Task light with auto shut-off illuminates the work surface for nighttime use
- Position height adjustment facilitates sit to stand interaction
- Locked position height adjustability ensures stability and eliminates movement
- Trim-line profile when stored



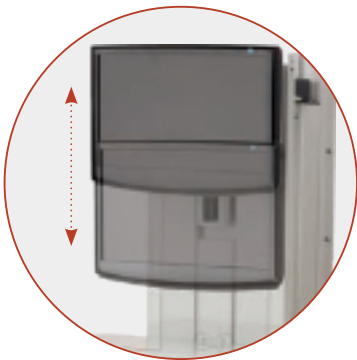
### Lighted Worksurface

*Tasklight with auto shut-off illuminates the work surface for nighttime use*



### Keyboard Drawer Extension

*Keyboard drawer extension with integrated wrist rest reduces strain*



### Monitor Adjustment

*Monitor Bracket allows for 5" of vertical monitor height adjustment*



**Tandem Arm™**

US Patent 10,051,956



# Tandem Arm™ & Slim Line

## Accessories & Specifications



### Access Pack

*Optional AccessPack organizes essential supplies for medication administration including medication cups, medical tape and alcohol wipes*



### Premium

Tandem Arm



### Premium

Slim Line

### Tandem Specifications

- Generous work surface with spill retaining lip:  
21.5"w x 11"d (54.61 x 27.94 cm)
- Comfort Grip Actuator automatically locks height position for improved stability (premium only)
- Pre-wired USB to Keyboard Drawer (premium only)
- Dual pivot points with 180° rotation
- Shuttle maintains distance from wall during full height adjustment range
- Depth when stowed:  
Premium - 7.375" (18.73 cm)  
Standard - 7.125" (18.09 cm)
- Integrated tech box CPU storage:  
2.6"h x 9.9"w x 10"d  
(6.6 x 25.14 x 25.4 cm)
- 7.1 lbs (3.22 kg)

### Slim Line Specifications

- Generous work surface with spill retaining lip:  
21.5"w x 11"d  
(54.61 x 27.94 cm)
- Comfort Grip Actuator automatically locks height position for improved stability (premium only)
- Pre-wired USB to Keyboard Drawer (premium only)
- Height Adjustment Brake locks height position and improves stability
- Depth when stowed: 4.125" (10.48 cm)
- Maximum footprint:  
34"h x 25.16"w x 4.125"d  
(86.36 x 63.9 x 10.48 cm)
- Monitor adjusts for viewing from multiple directions

Secure, user-friendly cassette med cart

# Avalo ACi

the ACi Medication Cart combines the latest medication cart design with proven mobile computing and point-of-care technology solutions.





# Avalo® ACi

## Integrated Medication Cart

This versatile platform for medication control provides your facility a fully integrated system of storage and technology to make your medication management process more efficient. The numerous benefits of the ACi Medication Cart combine to offer maximum flexibility and functionality.

- Flexible platform for a choice of computing options
- Power status display on LCD
- Integrated USB hub
- Large retractable mouse tray
- 104-key keyboard on retractable tray
- Configurable medication storage with 2 bin sizes and 3 drawer sizes
- Keyless access with auto-relocking



### Secondary Access

Select from a bar code or proximity card reader to serve as the primary or secondary access requirement



### Multiple Drawer Sizes

Your choice of 3", 6", and 10" drawer depths



### Keyless Narcotic Storage

Greatly augments security to further optimize control and accountability



Avalo® ACi





# Avalo® ACi

## Integrated Medication Cart



### Utility Drawers

*In 3", 6", and 10" drawer depths for added storage (ACMi only)*



### Cassette Bins

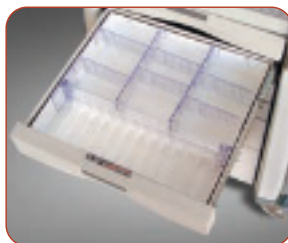
*Cassette bins are available in 5.5" [3-across] and 8" Bin [2-across]*



### Auto-Lock™

*Automatically relocks motionless carts after a specified period of time*

## Accessory Options



Removable Drawer Tray



Double-Wide 10" Narc Box



Accessory Mounting Bracket



Kendall Sharps Container



Clear Top Mat



Bulk Storage



Kendall Glove Box



Waste with Lid

*Ask your Capsa Representative about ACi cassette transfer carts.*



# Warranty Service & Support

Capsa Healthcare products are engineered and tested to perform in a 24/7 clinical environment. However, should you require support for any service issues, Capsa provides a comprehensive service program focused on rapid resolution to keep your cart fleet operational and your clinicians supported.

- Large network of certified field support technicians
- Next business day parts and components replacement
- On-site engineering, installation, and implementation support available

**NEXT  
BUSINESS DAY  
PARTS**

**ON-SITE  
SUPPORT**

**2-HOUR  
RESPONSE  
TIME**

Contact your **Capsa Sales Representative** for more detailed information about Capsa's warranty and service programs.



## **Black Book Award**

Recognized in 2020 for the highest user satisfaction in a 3rd party research study



Elevating performance,  
**every day.**



  
**CAPSAHEALTHCARE**



Certified ISO  
27001:2013



Certified ISO  
9001:2015

**SYSTMZ**  
SINGAPORE

16 Sungei Kadut Way  
Singapore 728793

+65 6465-0387 (Main)  
+65 6465-0656 (Fax)  
[info@systmz.sg](mailto:info@systmz.sg)

**SYSTMZ**  
MALAYSIA

No.11, Jalan PJU 3/46,  
Sunway Damansara Technology Park,  
47810 Petaling Jaya,  
Selangor Darul Ehsan Malaysia

+60 7803 8088 (Main)  
+6016 9200203 (Mobile)  
[info@systmz.com.my](mailto:info@systmz.com.my)